

GPS location monitoring and analytics that remove the guesswork.

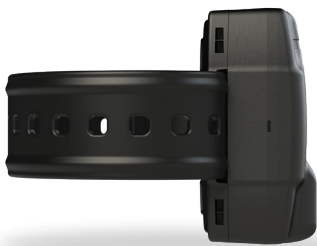
For offenders requiring around-the-clock location monitoring, **SCRAM GPS®** takes the 1,440 location points a client generates per day and distills it into clean, easy-to-view information, helping corrections officers more effectively supervise clients while enhancing community safety. Officers can quickly make sense of client movements by reviewing stop patterns, charging, and alert analysis without having to revise data point-by-point—saving time for the clients and tasks that truly need attention.

SCRAM GPS is ideal for:

- High-risk offenders
- Pretrial and probation
- Parole and re-entry
- Domestic violence cases
- Sex and violent offenders

Key features and benefits:

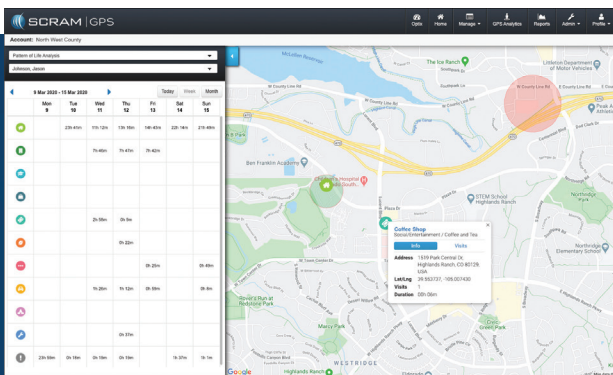
- Strap technology eliminates false alerts
- 30-second installation time
- Variable range and window leave settings
- Maximized performance with optional beacon to reduce location and communication alerts
- On-demand Pursuit Mode automatically provides GPS points every 15 seconds
- Available On-Body Charger enables clients to charge on the go



Revolutionary strap design and tamper technology



SCRAM GPS Beacon



Pattern of Life Mapping with SCRAM GPS

With Google Maps and Google Info windows built directly into the SCRAM GPS monitoring software, officers can quickly identify a client's exact location and easily put client movements into context. Various mapping options allow officers to view Pattern of Life location points by day, week, month, and more. Travel details such as arrival/departure time, address, and time spent at each location provide additional insights into a client's typical travel behavior.

Integrated Software & Mobile Solutions

SCRAM TouchPoint™ Mobile App

- Improves client engagement while making SCRAM GPS monitoring programs more efficient
- Secure, real-time messaging, automated equipment reminders, and mobile check-ins help clients successfully complete the terms of their supervision



SCRAM Optix™

- Streamline officer workflows by allowing them to manage their entire SCRAM electronic monitoring caseload with a single login
- Search for clients, view and work alerts, and run advanced reports and interactive program analytics

Insights from Data & Analytics

Actionable Data with GPS Analytics and Pattern of Life Mapping

- Quickly analyze up to a month of GPS points to put client movements in context
- See specific locations visited by a client, easily distinguish travel patterns, and identify unknown locations with integrated Google Maps



Reporting and Program Analytics

- Integrated reports graphically illustrate key program metrics in an easily shared format
- SCRAM Interactive Program analytics provide in-depth, configurable insights on a program's health

Victim Notification

SCRAM Ally™ Mobile App

- Works in conjunction with SCRAM GPS to notify a victim and the supervising authorities when a GPS client is in proximity to the victim's phone
- Can help provide peace of mind for the victim and gives officers additional insight into the location and actions of high-risk clients

